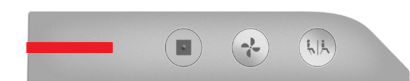




MANUAL DE REPARACIÓN

Repair manual

Manuel de réparation



X1 parpadeo/5 seg
X1 blink/5 sec
X1 clignotement/5 sec

ERROR 1

NO SALE AGUA REBOSADERO
NOT WATER OVERFLOWS
L'EAU NE SORT PAS PAR LE TROP-PLEIN



X1 parpadeo/5 seg
X1 blink/5 sec
X1 clignotement/5 sec

ERROR 1

EL LAVADO SE PARA Y SALE AGUA REBOSADERO
CLEANING STOPS AND WATER OVERFLOWS
LE LAVAGE S'ARRÊTE ET L'EAU SORT PAR LE TROP-PLEIN



X2 parpadeo/5 seg
X2 blink/5 sec
X2 clignotements/5 sec

ERROR 2

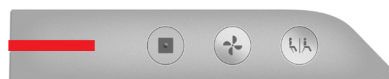
EL LAVADO SE PARA
CLEANING STOPS
LE LAVAGE S'ARRÊTE



X3 parpadeo/5 seg
X3 blink/5 sec
X3 clignotements/5 sec

ERROR 3

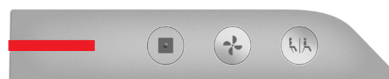
EL CAUDAL ES INFERIOR A LO HABITUAL
LESS WATERFLOW THAN USUAL
LE DÉBIT EST INFÉRIEUR À L'HABITUEL



X4 parpadeo/5 seg
X4 blink/5 sec
X4 clignotements/5 sec

ERROR 4

EL LAVADO SE PARA
CLEANING STOPS
LE LAVAGE S'ARRÊTE



X5 parpadeo/5 seg
X5 blink/5 sec
X5 clignotements/5 sec

ERROR 5

EL LAVADO SE PARA
CLEANING STOPS
LE LAVAGE S'ARRÊTE



X6 parpadeo/5 seg
X6 blink/5 sec
X6 clignotements/5 sec

ERROR 6

EL AGUA NO SALE CALIENTE
WATER ISN'T HOT
L'EAU NE SORT PAS CHAUDE



X7 parpadeo/5 seg
X7 blink/5 sec
X7 clignotements/5 sec

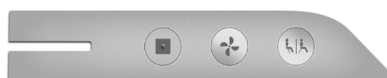
ERROR 7

EL AGUA NO SALE CALIENTE
WATER ISN'T HOT
L'EAU NE SORT PAS CHAUDE



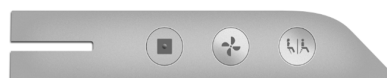
Sin parpadeos
Without blinks
Aucun clignotements

NO RESPONDE EL PANEL LATERAL
NOT RESPONDING LATERAL PANEL
LE PANNEAU LATÉRAL NE RÉPOND PAS



Sin parpadeos
Without blinks
Aucun clignotements

EL MANDO NO RESPONDE Y EL PANEL LATERAL FUNCIONA
REMOTE DOESN'T RESPOND AND THE LATERAL PANEL WORKS
LA TÉLÉCOMMANDE NE RÉPOND PAS MAIS LE PANNEAU LATÉRAL
FONCTIONNE



Sin parpadeos
Without blinks
Aucun clignotements

PARPADEAN LEDS DEL MANDO Y LUCES PANEL LATERAL OK
REMOTE LEDS BLINKING AND LIGHTS LATERAL PANEL ARE OK
LES LEDS DE LA TÉLÉCOMMANDE À DISTANCE CLIGNOTENT ET LES
LUMIÈRES DU PANNEAU LATÉRAL SONT OK



Sin parpadeos
Without blinks
Aucun clignotements

NO FUNCIONA PERO PITA (2 BEEPS) EN MANDO Y PANEL LATERAL
DOESN'T WORK BUT SOUNDS (2 BEEPS) IN REMOTE & LATERAL PANEL
L'APPAREIL NE FONCTIONNE PAS MAIS BIPE 2 FOIS SUR LA
TÉLÉCOMMANDE ET LE PANNEAU LATÉRAL



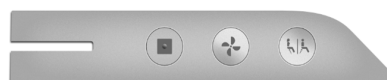
Sin parpadeos
Without blinks
Aucun clignotements

FUNCIÓN LAVADO SE PARA
CLEANING FUNCTION STOPS
LE MODE LAVAGE S'ARRÊTE



Sin parpadeos
Without blinks
Aucun clignotements

LA CÁNULA NO RETROCEDE O NO SALE
THE NOZZLE DOESN'T GO BACK OR DOESN'T COME OUT
LA CANULE NE SORT PAS OU NE RECULE PAS



Sin parpadeos
Without blinks
Aucun clignotements

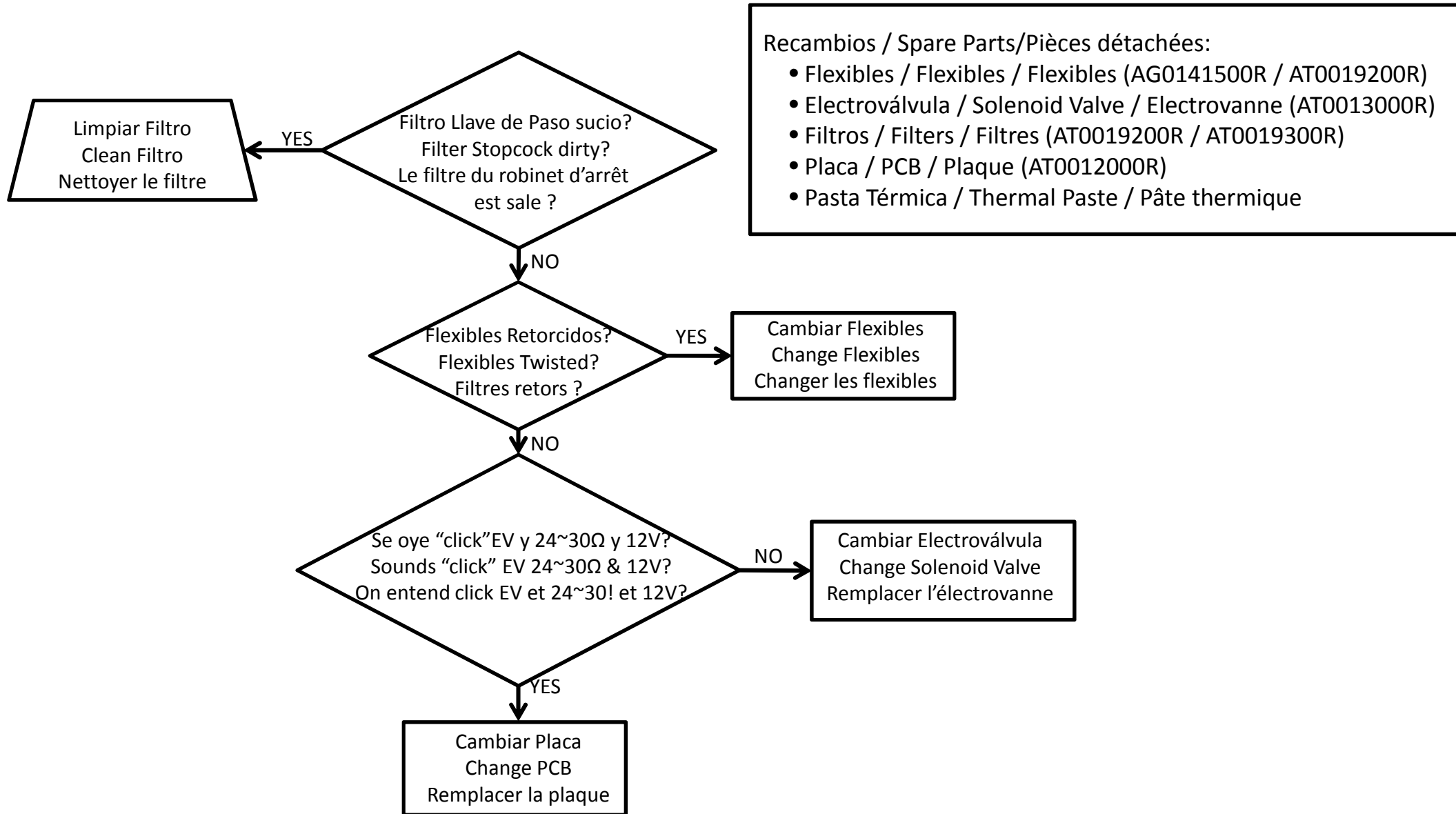
EL SECADO SE PARA O NO FUNCIONA
DRYER STOPS OR DOESN'T WORKING
LE MODE SÉCHAGE NE FONCTIONNE PAS OU NE S'ARRÊTE PAS



Sin parpadeos
Without blinks
Aucun clignotements

TEMPERATURA DEL SECADO NO SALE CALIENTE
DRYER TEMPERATURE ISN'T HOT
LA TEMPÉRATURE DU MODE SÉCHAGE NE SORT PAS CHAUDE

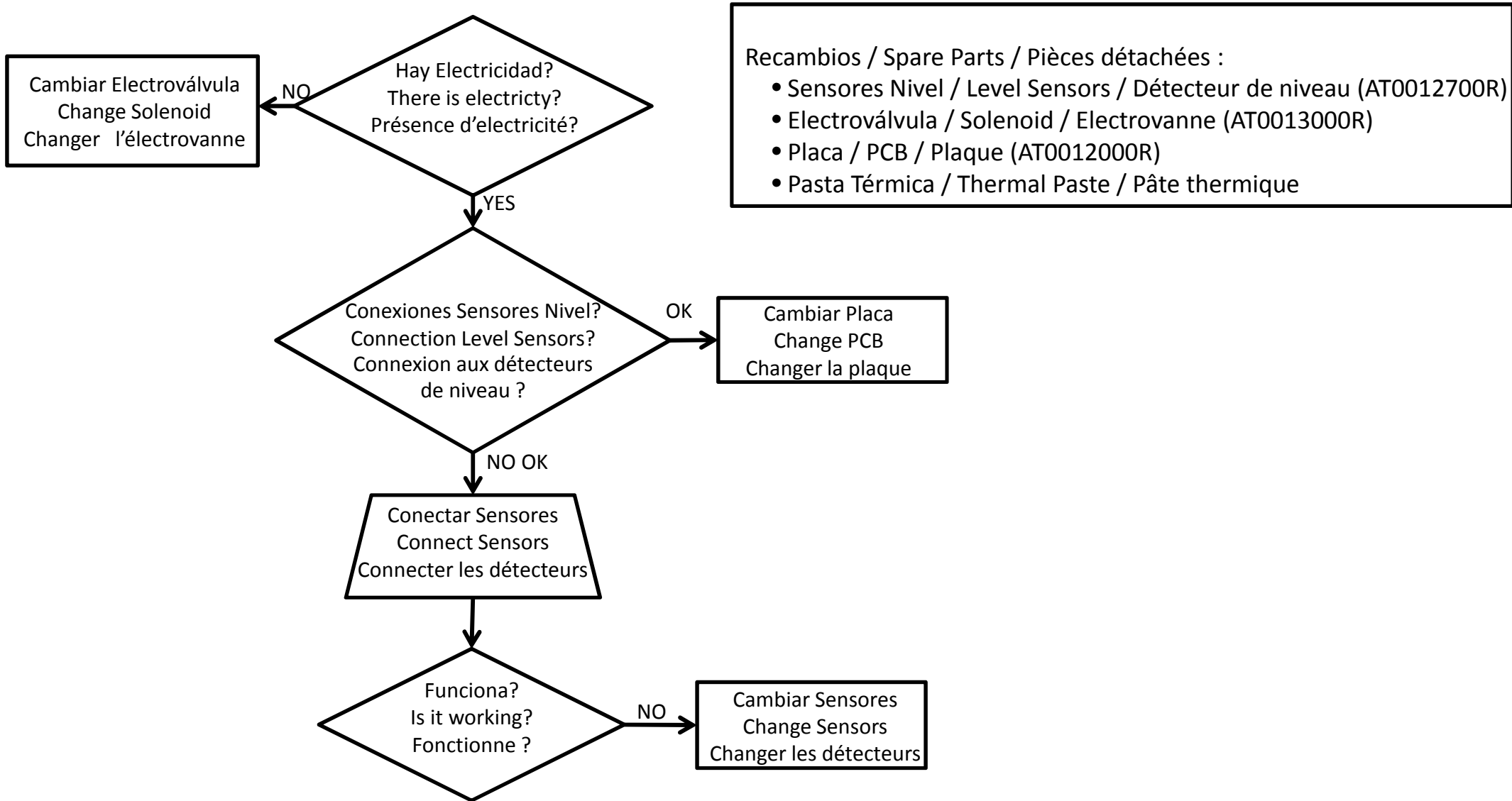
ERR1 - EL LAVADO SE PARA Y NO SALE AGUA REBOSADERO
 ERR1 - CLEANING STOPS WITHOUT WATER OVERFLOWS
 ERR1 - LE MODE LAVAGE S'ARRÊTE ET L'EAU NE SORT PAS

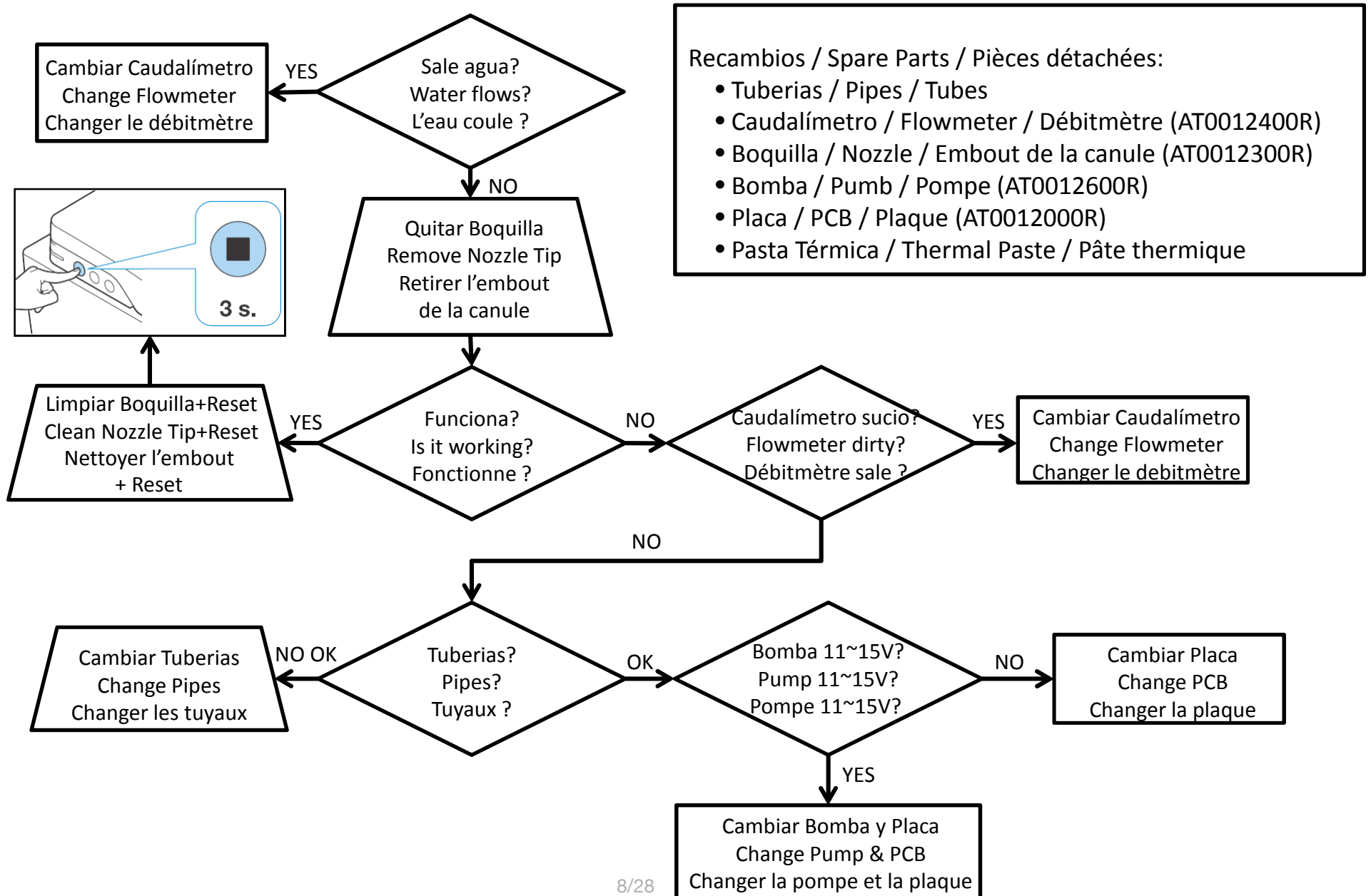


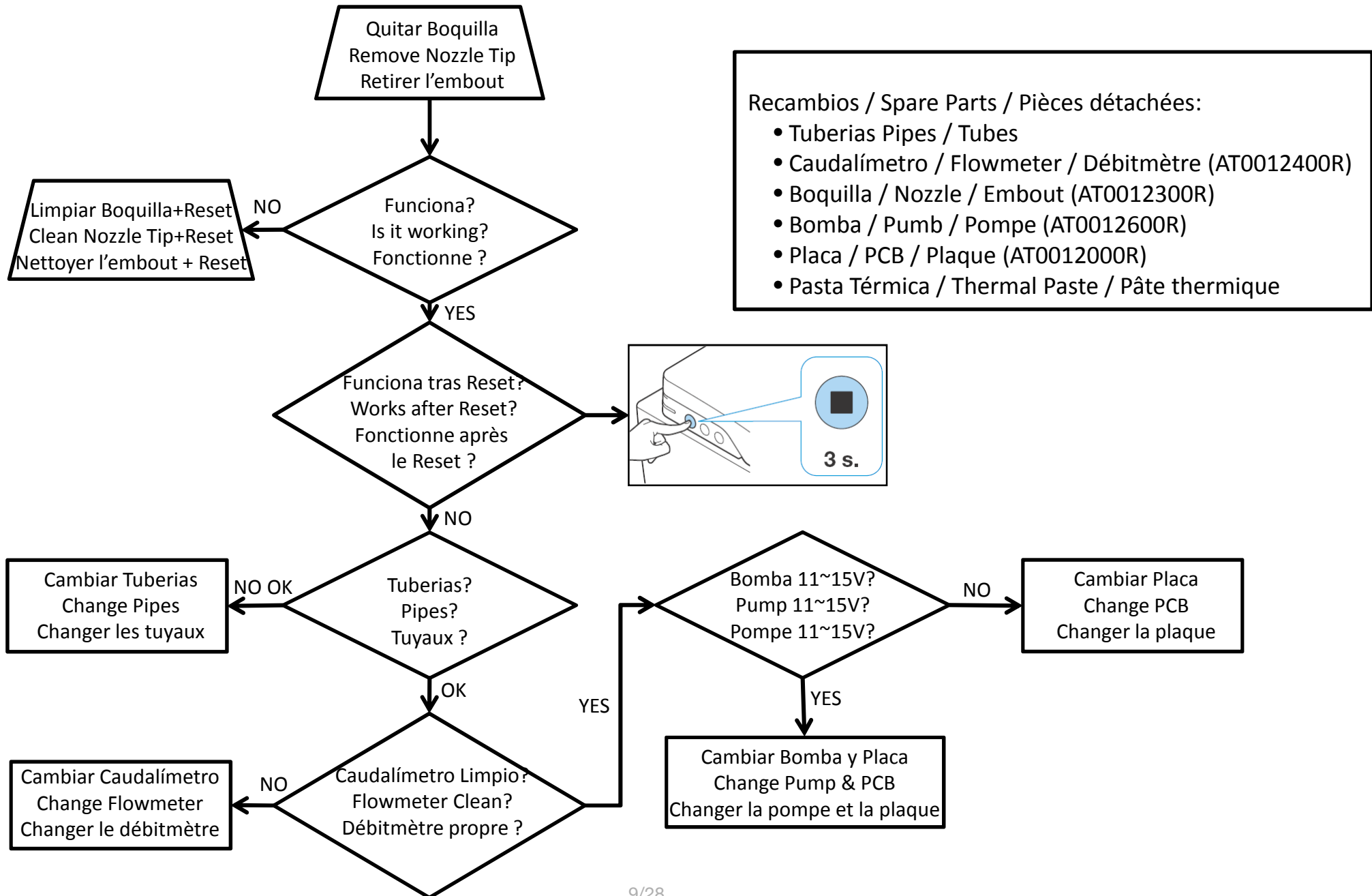
2018/11/28

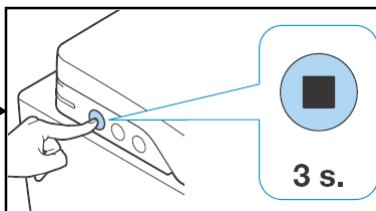
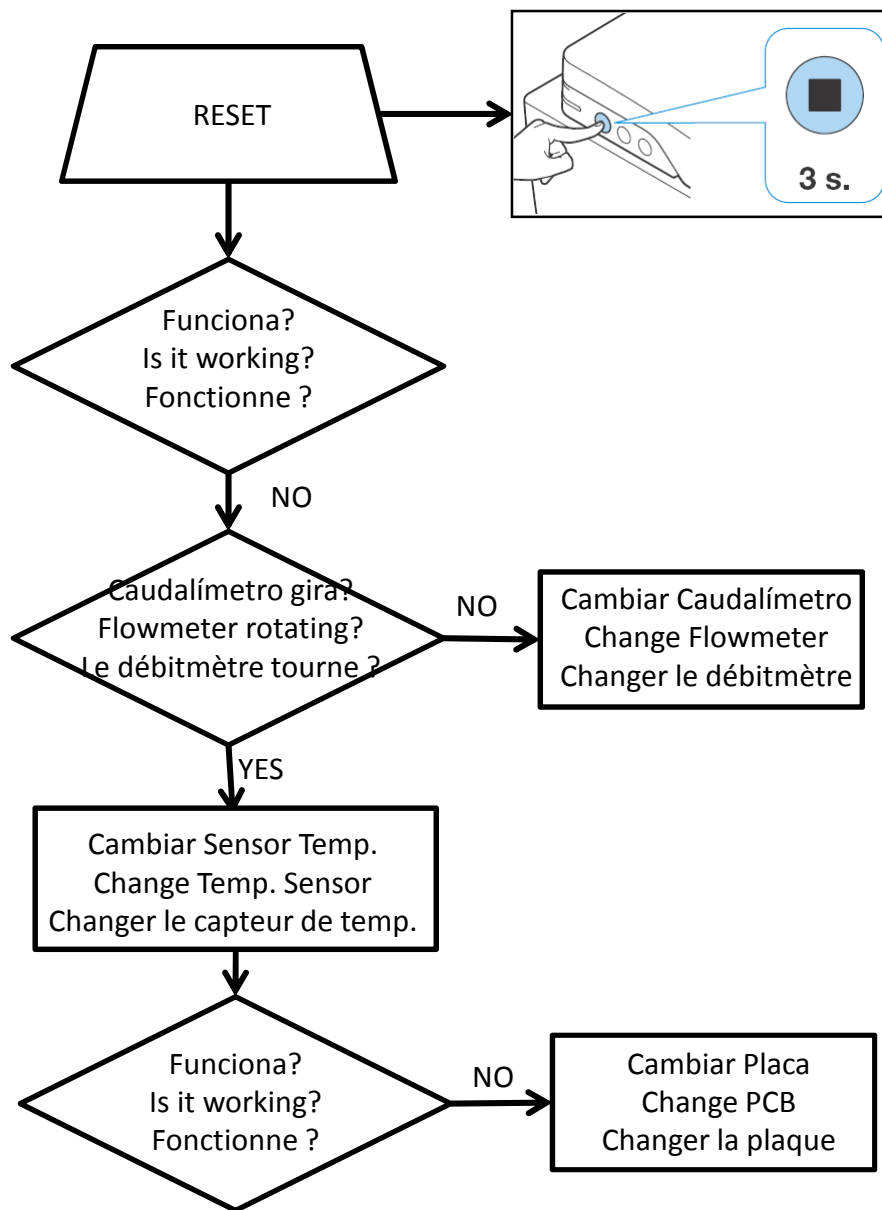
b

AY0011600R



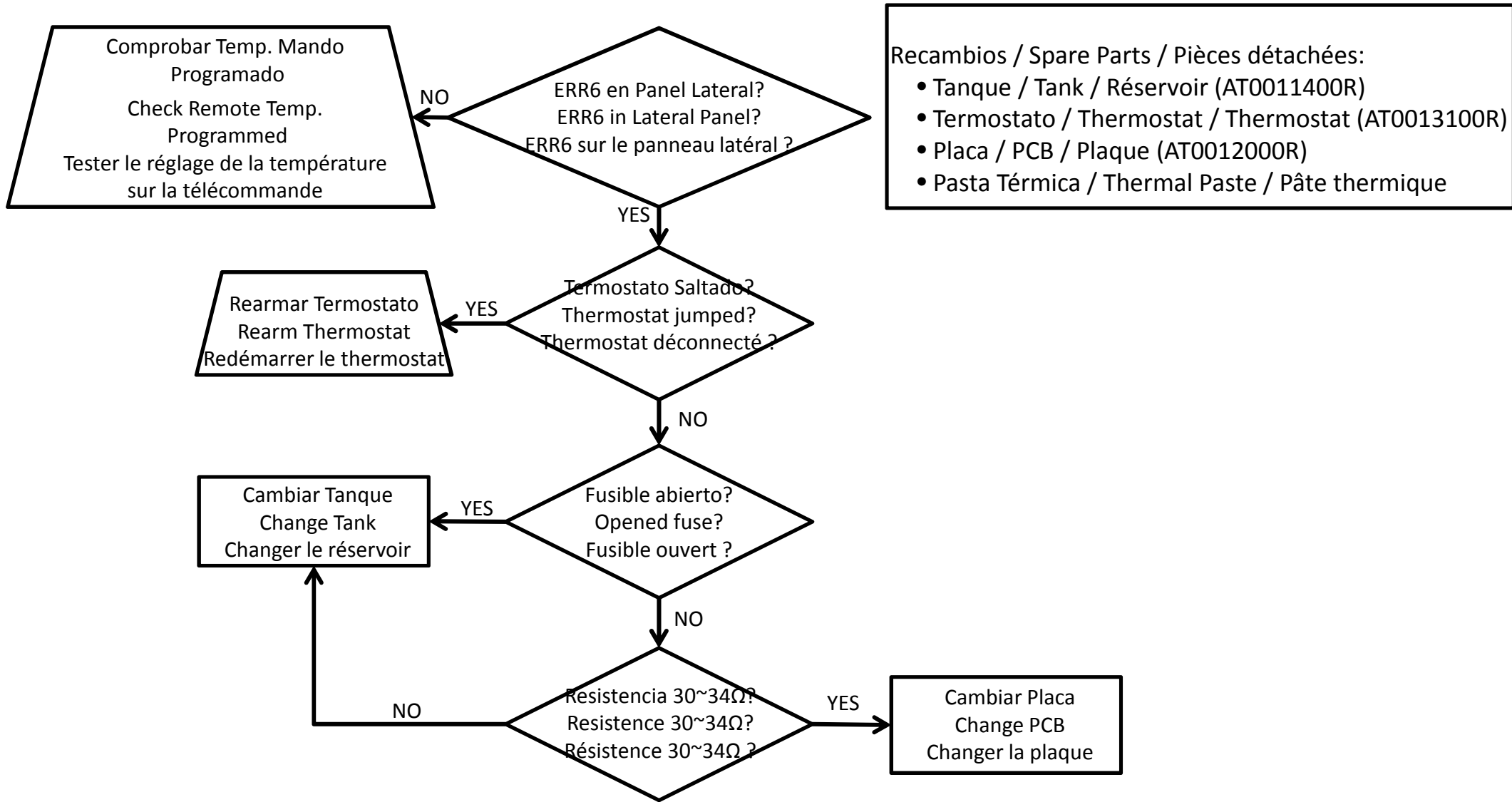


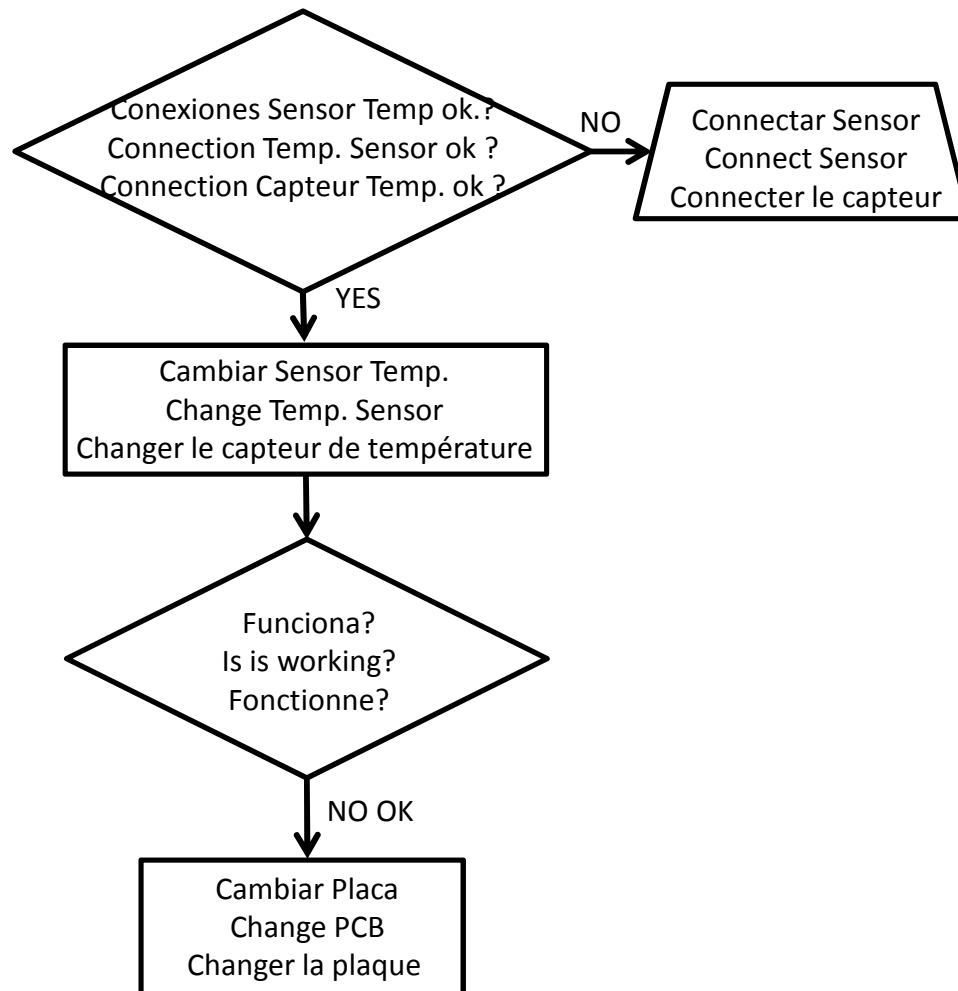




Recambios / Spare Parts / Pièces détachées:

- Caudalímetro / Flowmeter / Débitmètre (AT0012400R)
- Sensor Temp. / Temp. Sensor / Capteur temp. (AT0012700R)
- Placa / PCB / Plaque (AT0012000R)
- Pasta Térmica / Thermal Paste / Pâte thermique

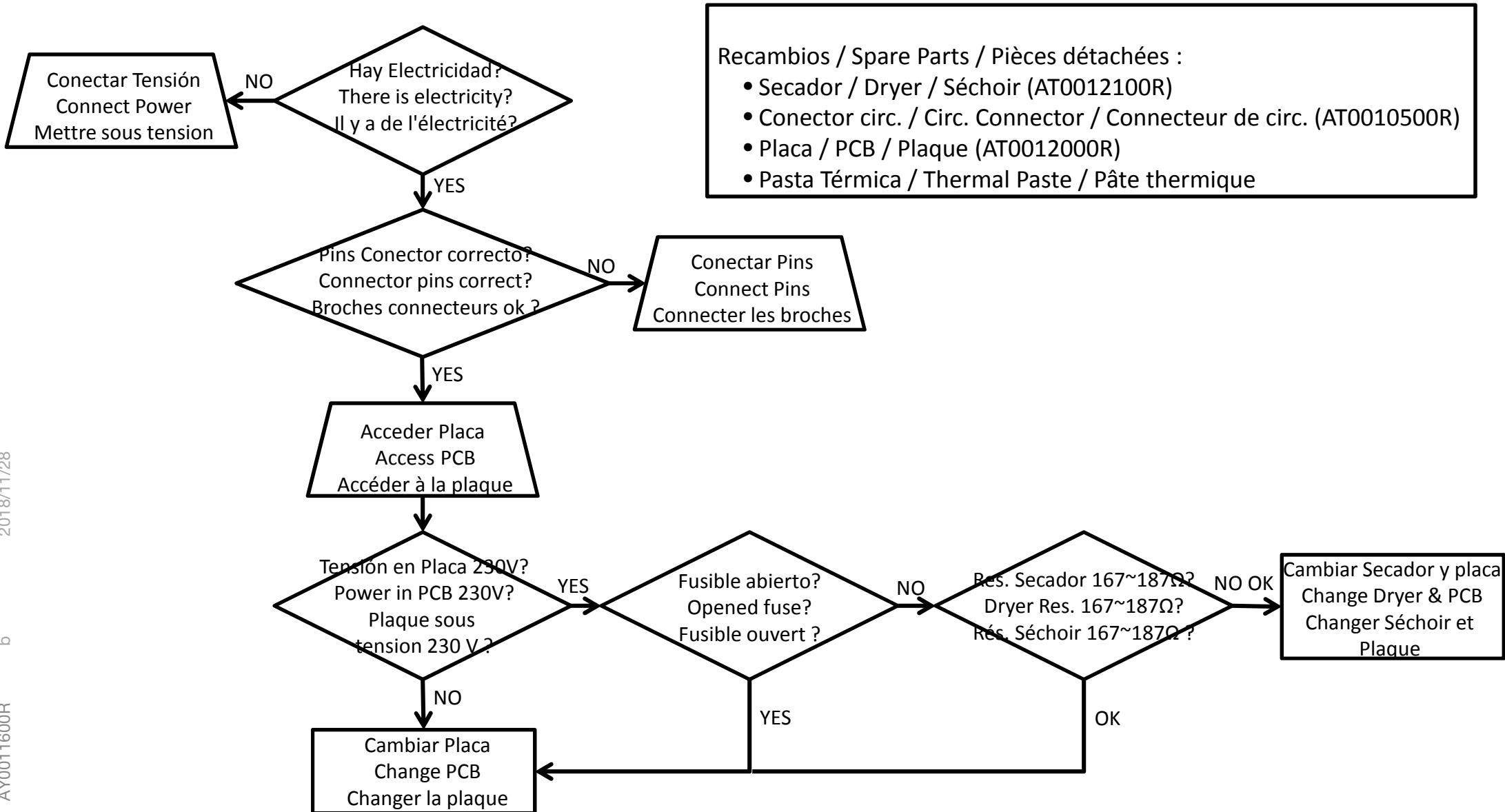




Recambios / Spare Parts / Pièces détachées:

- Sensor Temp. / Temp. Sensor / Capteur Temp. (AT0012700R)
- Placa / PCB / Plaque (AT0012000R)
- Pasta Térmica / Thermal Paste / Pâte thermique

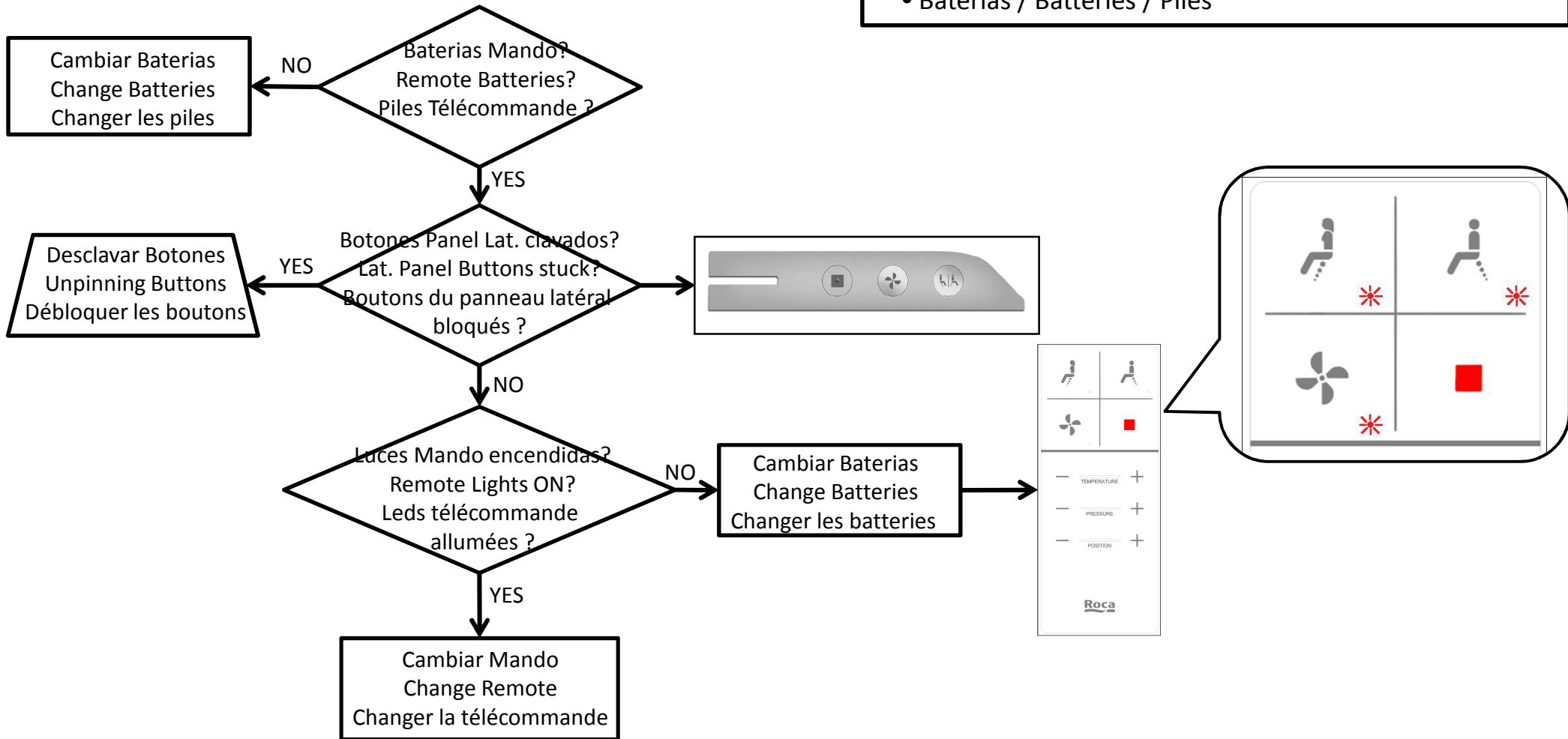
NO RESPONDE EL PANEL LATERAL
NOT RESPONDING LATERAL PANEL
LE PANNEAU LATÉRAL NE RÉPOND PAS



EL MANDO NO RESPONDE Y EL PANEL LATERAL FUNCIONA REMOTE DOESN'T RESPOND AND THE LATERAL PANEL WORKS LA COMMANDE À DISTANCE NE RÉPOND PAS ET LE PANNEAU LATÉRAL FONCTIONNE

Recambios / Spare Parts / Pièces détachées:

- Mando / Remote / Commande à distance (AT0010600R)
- Baterias / Batteries / Piles

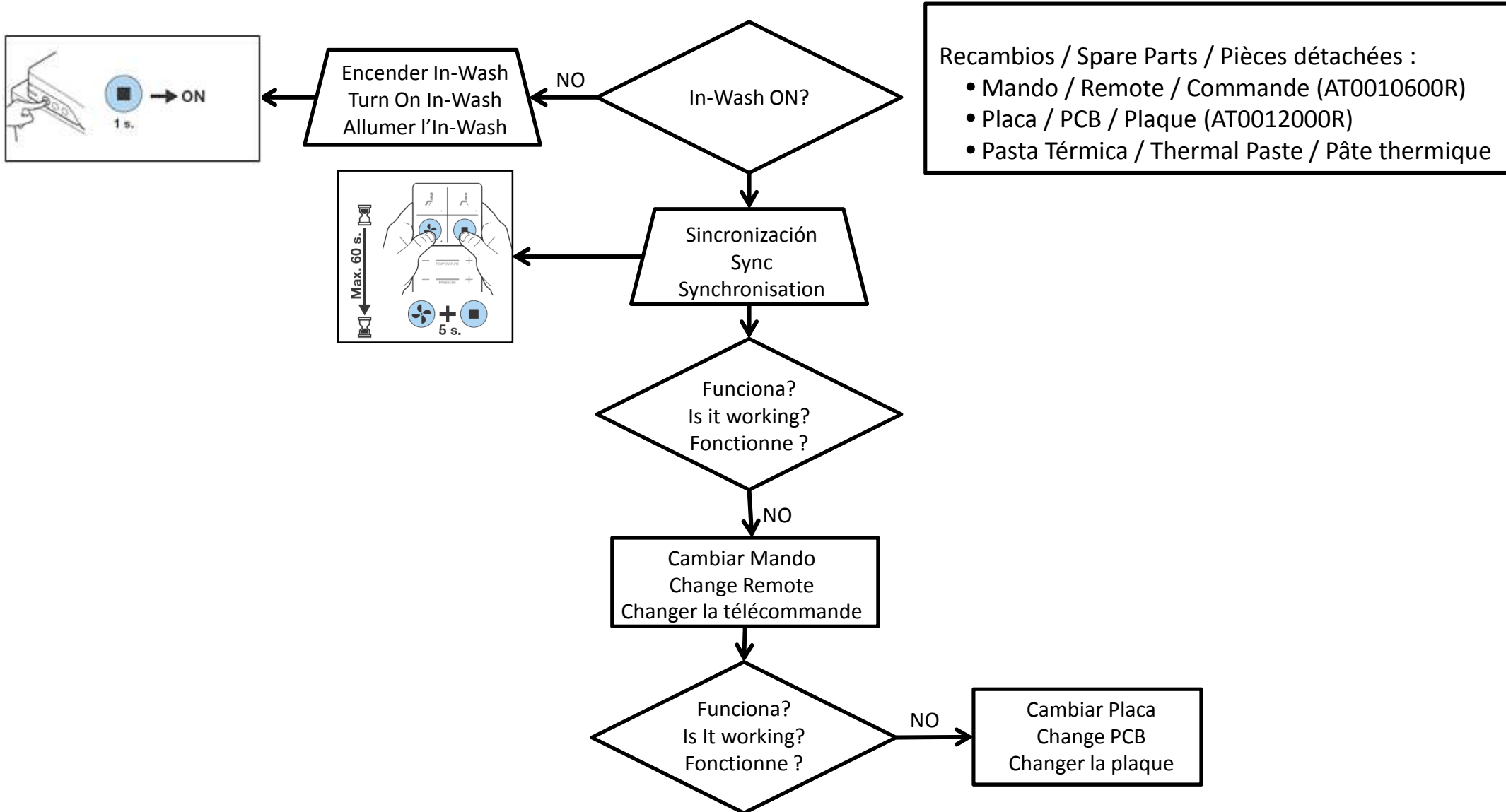


2018/11/28

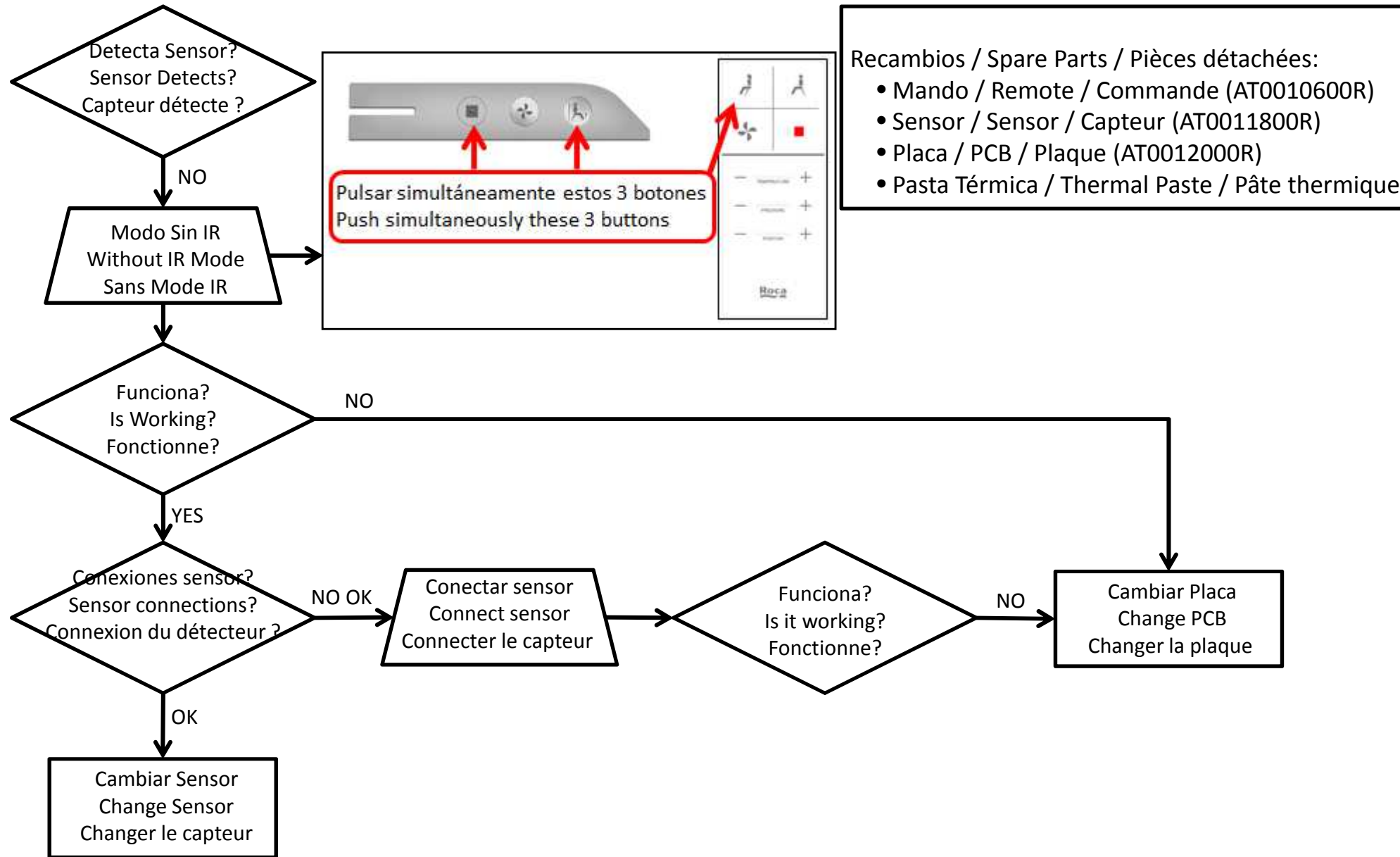
b

AY0011600R

PARPADEAN LEDS FUNCIONES DEL MANDO Y LUCES PANEL LATERAL OK
 FUNCTION REMOTE LEDS BLINKING AND LIGHTS LATERAL PANEL ARE OK
 LES LEDS DES FONCTIONS DE LA COMMANDE À DISTANCE CLIGNOTENT
 ET LES VOYANTS DU PANNEAU LATÉRAL SONT OK



NO FUNCIONA PERO PITA (2 BEEPS) EN MANDO Y PANEL LATERAL
DOESN'T WORK BUT SOUNDS (2 BEEPS) IN REMOTE & LATERAL PANEL
NE FONCTIONNE PAS MAIS SONNE (2 BIPS) SUR LA COMMANDE À
DISTANCE ET LE PANNEAU LATÉRAL



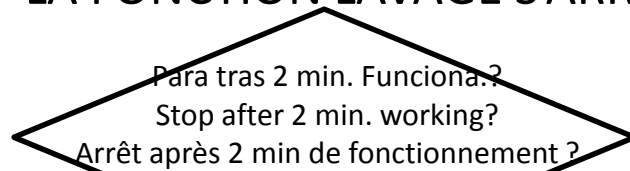
- Recambios / Spare Parts / Pièces détachées:
- Mando / Remote / Commande (AT0010600R)
 - Sensor / Sensor / Capteur (AT0011800R)
 - Placa / PCB / Plaque (AT0012000R)
 - Pasta Térmica / Thermal Paste / Pâte thermique

2018/11/28

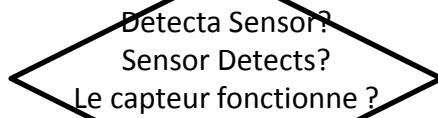
b

AY0011600R

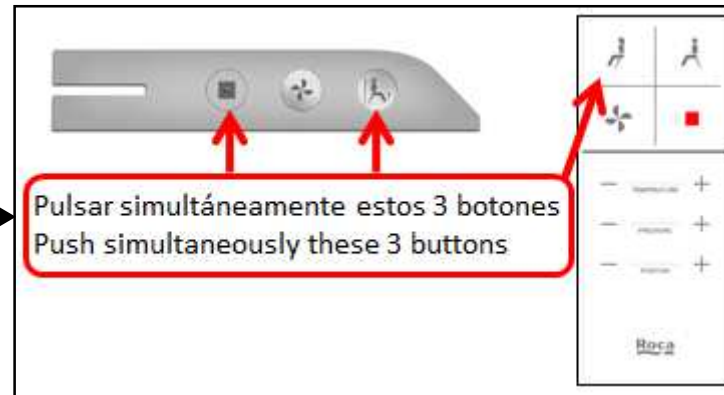
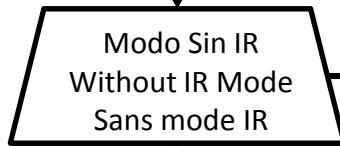
FUNCIÓN LAVADO SE PARA CLEANING FUNCTION STOPS LA FONCTION LAVAGE S'ARRÊTE



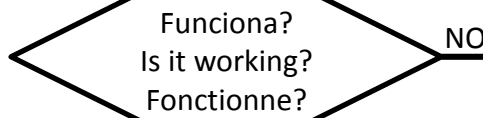
NO



NO

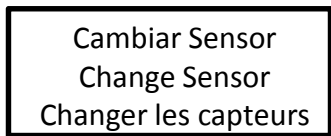


- Recambios / Spare Parts / Pièces détachées:
- Mando / Remote / Commande à distance (AT0010600R)
 - Sensor / Sensor / Capteur (AT0011800R)
 - Placa / PCB / Plaque (AT0012000R)
 - Pasta Térmica / Thermal Paste / Pâte thermique

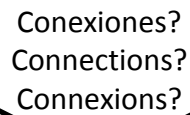


NO

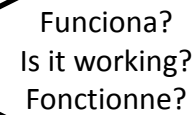
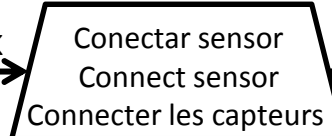
YES



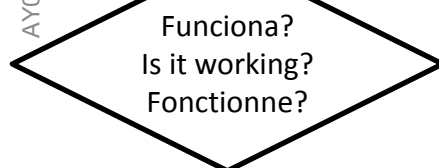
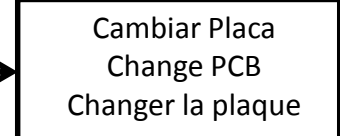
OK



NO OK



NO



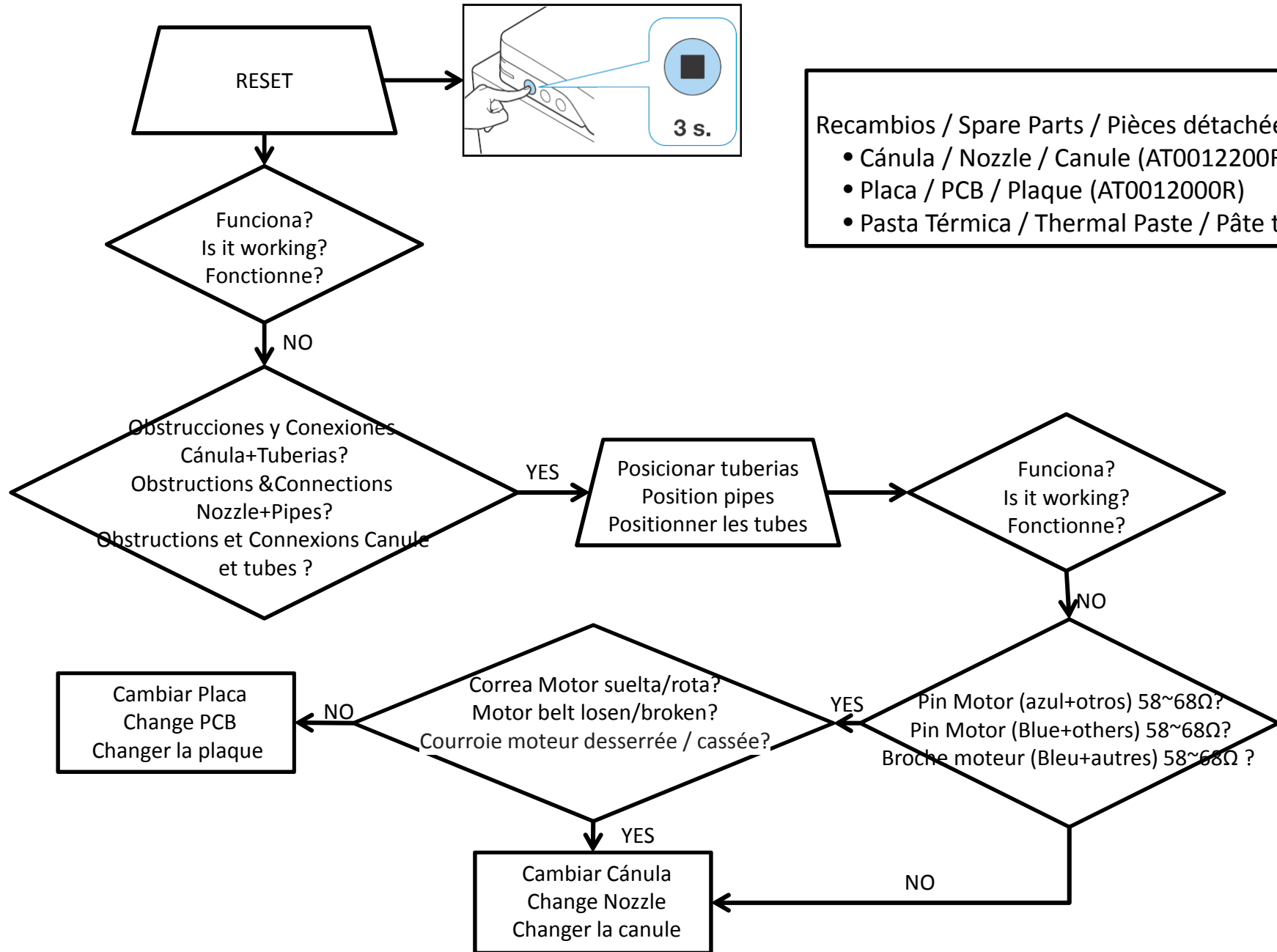
NO

2018/11/28

b

AY0011600R

LA CÁNULA NO RETROCEDE O NO SALE
THE NOZZLE DOESN'T GO BACK OR DOESN'T COME OUT
LA CANULE NE RECULE PAS OU NE SORT PAS



- Recambios / Spare Parts / Pièces détachées:
- Cánula / Nozzle / Canule (AT0012200R)
 - Placa / PCB / Plaque (AT0012000R)
 - Pasta Térmica / Thermal Paste / Pâte thermique

2018/11/28

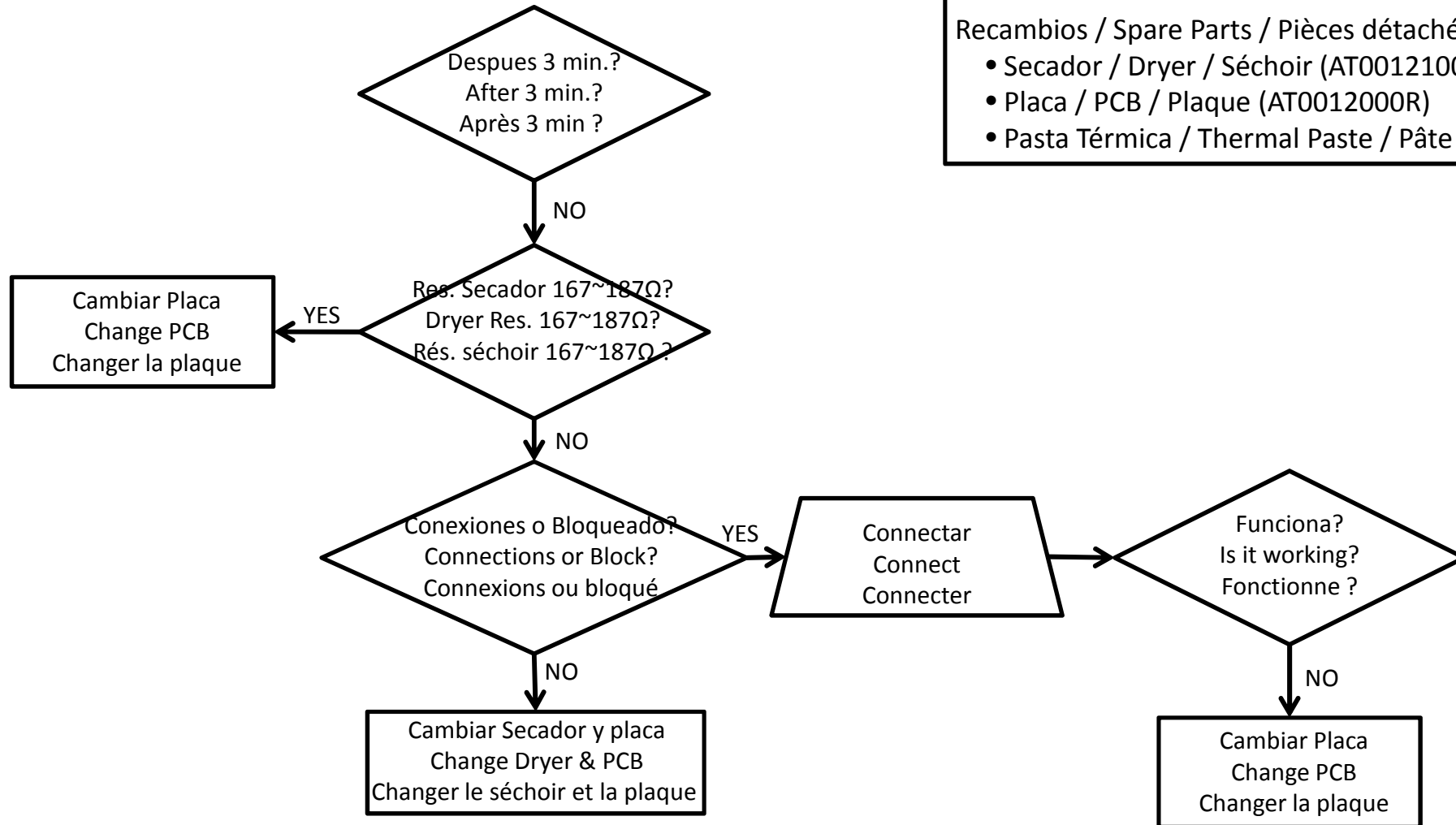
b

AY0011600R

EL SECADO SE PARA O NO FUNCIONA DRYER STOPS OR DOESN'T WORKING LE SÉCHOIR S'ARRÊTE OU NE FONCTIONNE PAS

Recambios / Spare Parts / Pièces détachées:

- Secador / Dryer / Séchoir (AT0012100R)
- Placa / PCB / Plaque (AT0012000R)
- Pasta Térmica / Thermal Paste / Pâte thermique



- Recambios / Spare Parts / Pièces détachées:
- Secador / Dryer / Séchoir (AT0012100R)
 - Placa / PCB / Plaque (AT0012000R)
 - Pasta Térmica / Thermal Paste / Pâte thermique

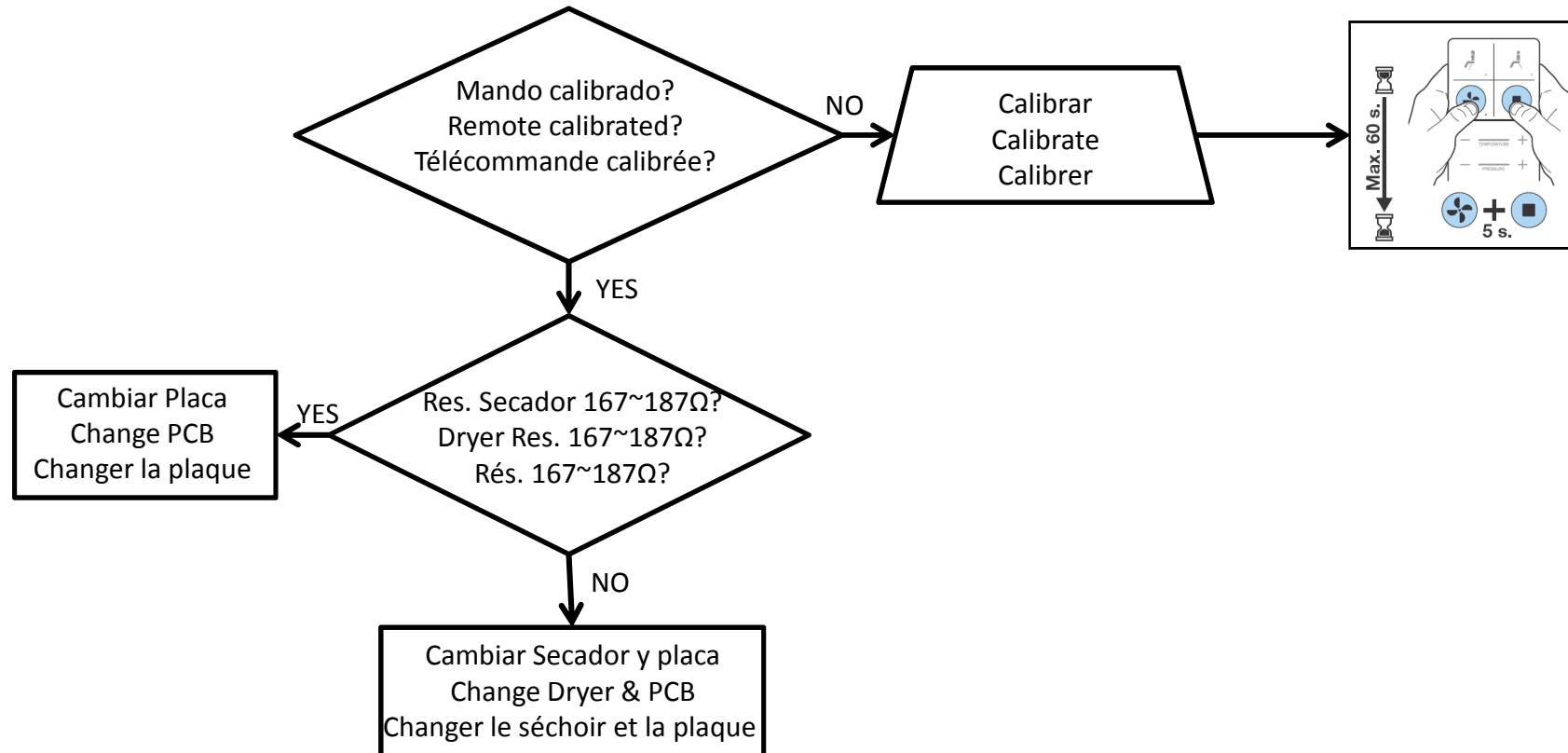


DIAGRAMA ELÉCTRICO ELECTRIC DIAGRAM DIAGRAMME ELECTRIQUE

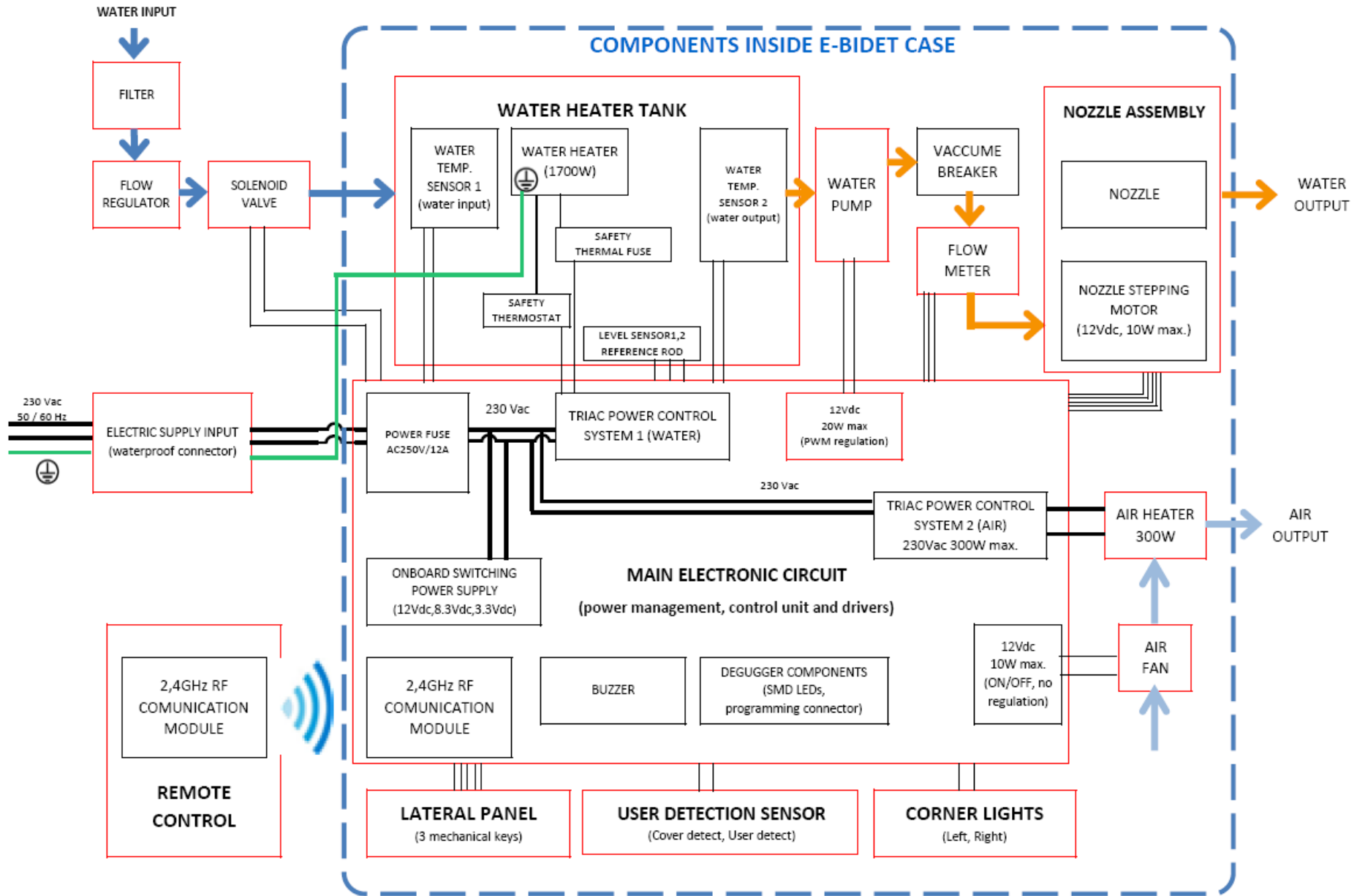
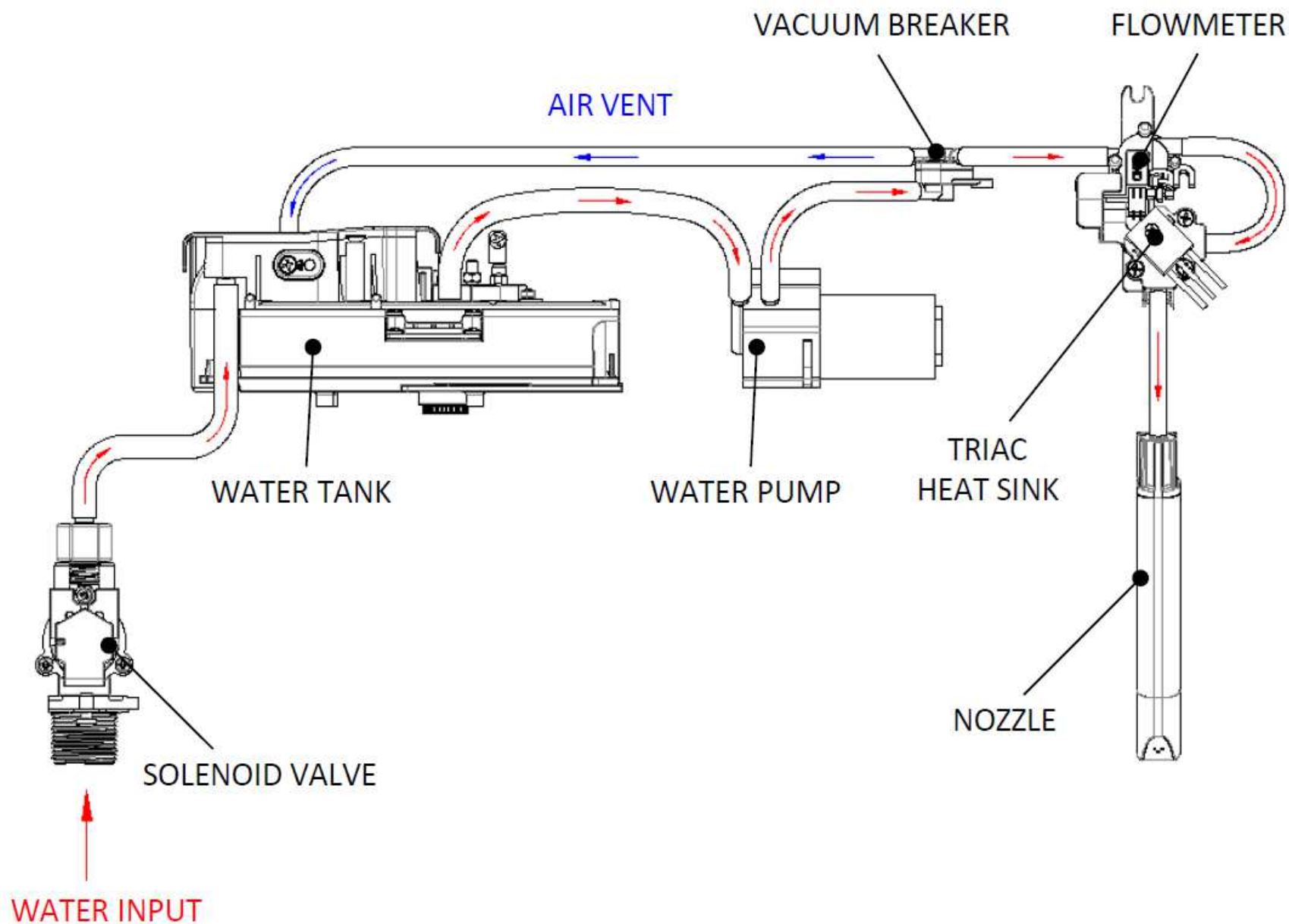
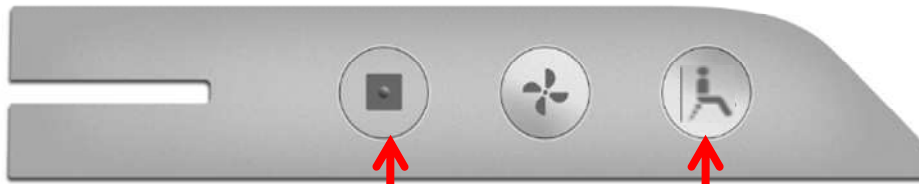


DIAGRAMA HIDRÁULICO
HYDRAULIC DIAGRAM
DIAGRAMME HYDRAULIQUE



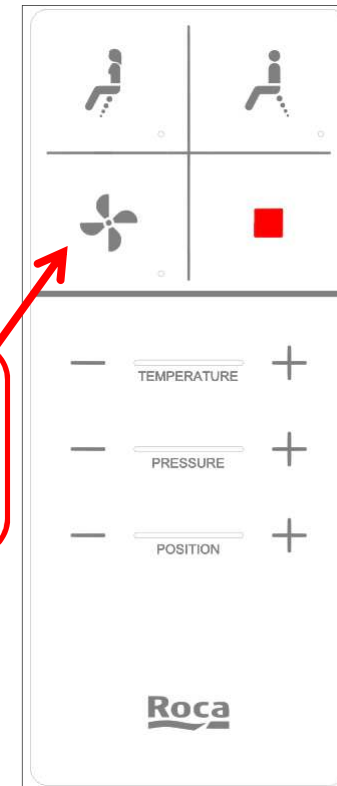
Vincular el mando con el equipo y, antes de 20 seg., configurar Modo Feria (antes de el ERR1 aparezca)
 Link the Remote with the product and, before of 20 sec., configurate Feria Mode (before ERR1 appears)
 Relier la télécommande avec le produit et, après 20 sec., configurer le Mode Expo (avant qu'ERR1 apparaisse)

Panel lateral
 Lateral Panel
 Panneau Latéral



Pulsar simultáneamente estos 3 botones
 Push simultaneously these 3 buttons
 Appuyer simultanément sur ces 3 boutons

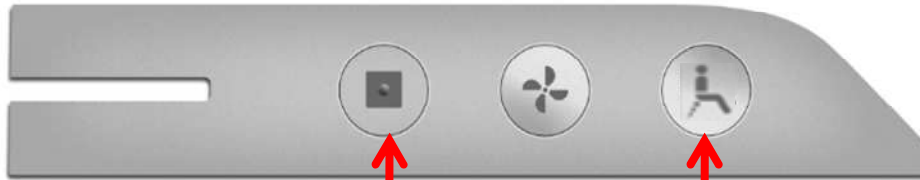
Mando a distancia
 Remote Control
 Commande à distance



Para volver a la configuración inicial pulsar de nuevo los 3 botones
 To return to the initial configuration, push again the 3 buttons
 Pour revenir à la configuration initial, presser de nouveau ces 3 boutons en même temps

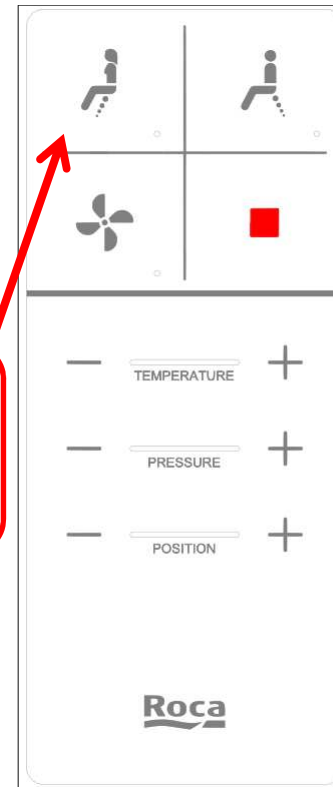
CONFIGURACIÓN MODO SIN INFRAROJOS (CON AGUA)
 CONFIGURATION MODE WITHOUT INFRARED (WITH WATER)
 CONFIGURATION MODE SANS INFRAROUGES (AVEC EAU)

Panel lateral
 Lateral Panel
 Panneau Latéral



Pulsar simultáneamente estos 3 botones
 Push simultaneously these 3 buttons
 Appuyez simultanément sur ces 3 boutons

Mando a distancia
 Remote Control
 Commande à distance

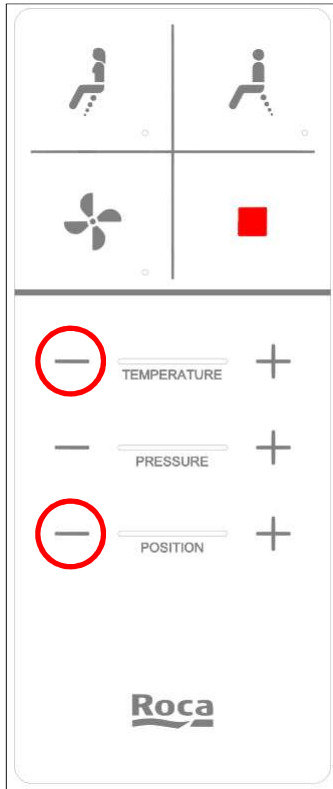


2018/11/28

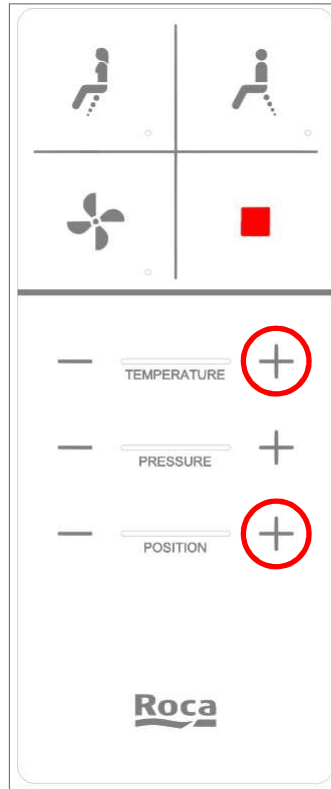
b

AY0011600R

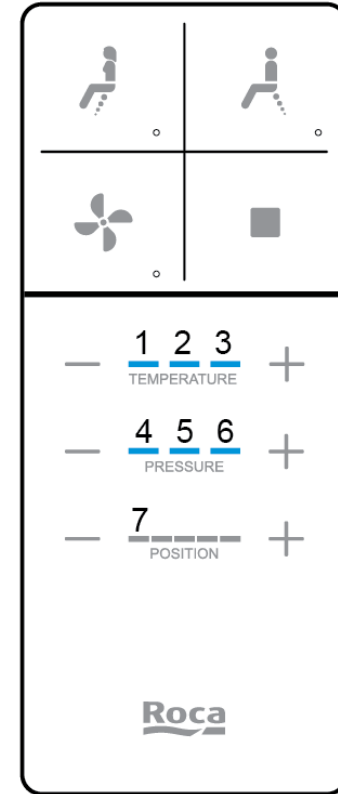
Para volver a la configuración inicial pulsar de nuevo los 3 botones
 To return to the initial configuration, push again the 3 buttons
 Pour revenir à la configuration initial, presser de nouveau ces 3 boutons



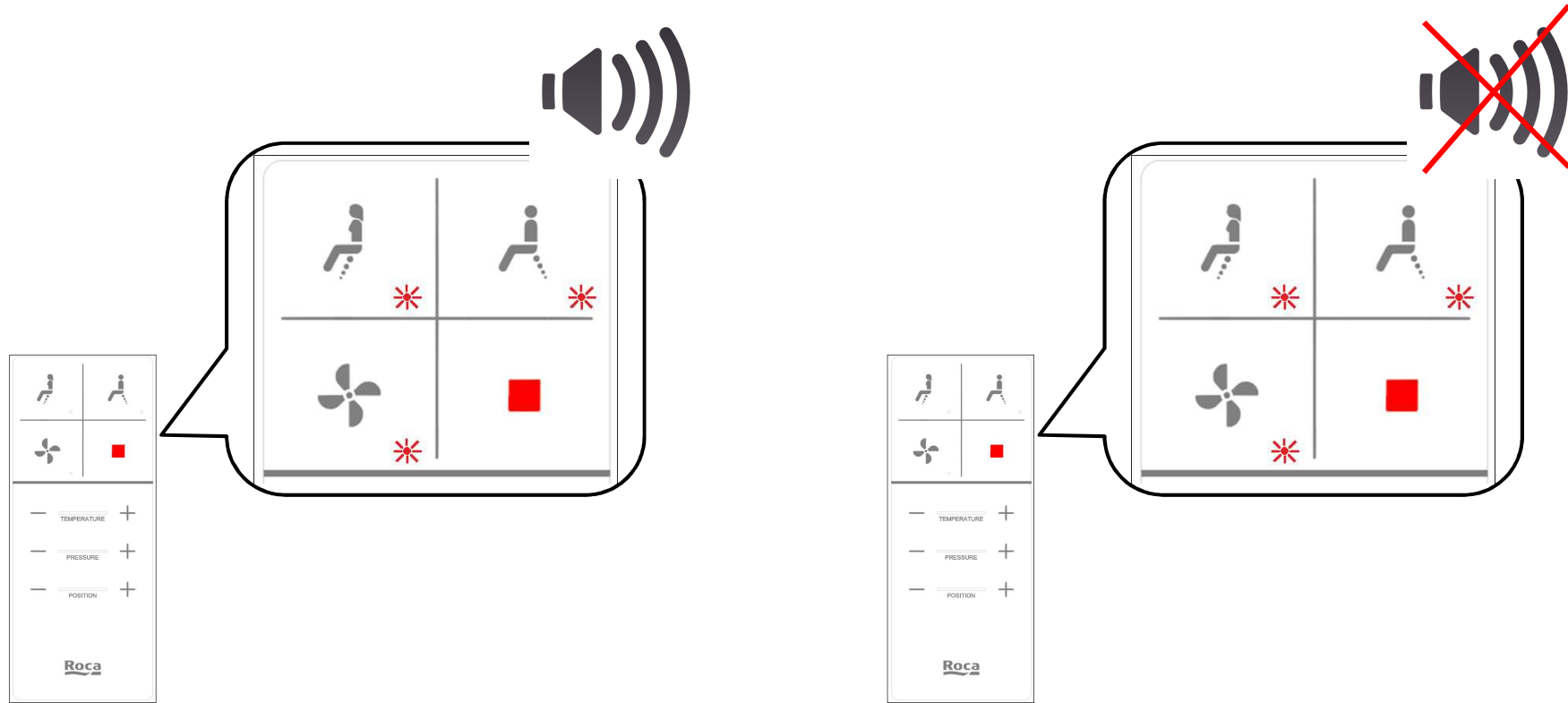
Lectura último estado
Reading last state
Lecture dernier état



Lectura estado actual
Reading actual state
Lecture état actuel



Reconocimiento Error (Ejemplo ERR6)
Error Recognition (Example ERR6)
Identification erreur (Exemple ERR6)



Parpadeo BEEP -> Comprobar Sensor
Blinking & BEEP -> Check Sensor
Clignotement & BIP -> Contrôle capteur

Parpadeo y no BEEP -> Sincronizar
Blinking & no BEEP -> Synchro
Clignotement & no BIP -> Synchroniser

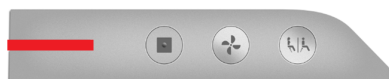


X1 parpadeo/5 seg
X1 blink/5 sec
X1 clignotement/5 sec

ERROR 1
(AGUA REBOSADERO)
(OVERFLOW WATER)
(AGUA TROP-PLEIN)

NO ENTRA AGUA
NO WATER INCOME
L'EAU N'ENTRE PAS

- 1) SENSOR NIVEL / LEVEL SENSOR / NIVEAU DU CAPTEUR
- 2) PLACA ELEC. / ELEC. BOARD / PLAQUE ELECTRONIQUE



X1 parpadeo/5 seg
X1 blink/5 sec
X1 clignotement/5 sec

ERROR 1
(SIN AGUA REB.)
(WIHTOUT OVERFL. WATER)
(SANS AGUA TROP-PLEIN)

NO ENTRA AGUA
NO WATER INCOME
L'EAU N'ENTRE PAS

- 1) FILTRO SUCIO / DIRTY FILTER / FILTRE SALE
- 2) FLEXIBLES RETORCIDOS / TWISTED HOSES / FLEXIBLES RETORS
- 3) ELECTROVÁLVULA / SOLENOID / ELECTROVANNE

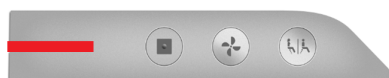


X2 parpadeos/5 seg
X2 blinks/5 sec
X2 clignotements/5 sec

ERROR 2

SIN SALIDA AGUA
NO WATER OUTCOME
L'EAU NE SORT PAS

- 1) TUBERIAS / PIPES / TUBES
- 2) CAUDALIMETRO / FLOWMETER / DÉBITMÈTRE
- 3) BOMBA / PUMP / POMPE
- 4) PLACA ELEC. / ELEC. BOARD / PLAQUE ELECTRONIQUE



X3 parpadeos/5 seg
X3 blinks/5 sec
X3 clignotements/5 sec

ERROR 3

NO SALE CASI AGUA
NO WATER OUTCOME
L'EAU NE SORT PAS

- 1) TUBERIAS / PIPES / TUBES
- 2) CAUDALIMETRO / FLOWMETER / DÉBITMÈTRE
- 3) BOMBA / PUMP / POMPE
- 4) PLACA ELEC. / ELEC. BOARD / PLAQUE ELECTRONIQUE



X4 parpadeos/5 seg
 X4 blinks/5 sec
 X4 clignotements/5 sec

ERROR 4

SOBRECALENT. AGUA
 WATER OVERHEAT
 EAU TROP CHAUDE

- 1) CAUDALIMETRO / FLOWMETER / DÉBITMÈTRE
- 2) SENSOR TEMP. / TEMP. SENSOR / CAPTEUR TEMP.
- 3) PLACA ELEC. / ELEC. BOARD / PLAQUE ELECTRONIQUE



X5 parpadeos/5 seg
 X5 blinks/5 sec
 X5 clignotements/5 sec

ERROR 5

SOBRECALENT. AGUA
 WATER OVERHEAT
 EAU TROP CHAUDE

- 1) CAUDALIMETRO / FLOWMETER / DÉBITMÈTRE
- 2) SENSOR TEMP. / TEMP. SENSOR / CAPTEUR TEMP.
- 3) PLACA ELEC. / ELEC. BOARD / PLAQUE ELECTRONIQUE



X6 parpadeos/5 seg
 X6 blinks/5 sec
 X6 clignotements/5 sec

ERROR 6

AGUA NO SE CALIENTA
 WATER ISN'T HOT
 L'EAU NE CHAUFFE PAS

- 1) TANQUE / TANK / RÉSERVOIR
- 2) PLACA ELEC. / ELEC. BOARD / PLAQUE ELECTRONIQUE



X7 parpadeos/5 seg
 X7 blinks/5 sec
 X7 clignotements/5 sec

ERROR 7

SENSOR TEMP. AGUA
 WATER TEMP. SENSOR
 CAPTEUR TEMP. EAU

- 1) SENSOR TEMP. AGUA / WATER TEMP. SENSOR / CAPTEUR TEMP. EAU
- 2) PLACA ELEC. / ELEC. BOARD / PLAQUE ELECTRONIQUE